

Proposition de Stage de Master recherche 2016

Learning-Based Facial Animation

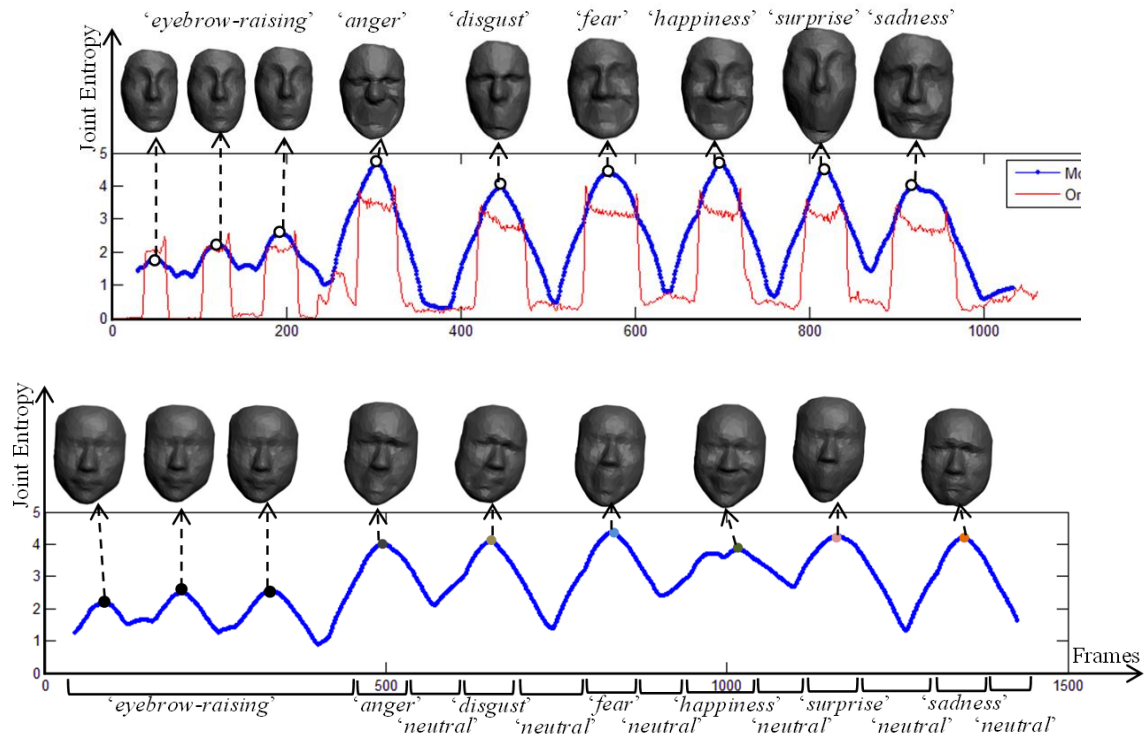


Fig.1 : Facial animation sequences of two persons carrying identical emotions.[1]

Duration : 6 months

Workplace : Laboratoire ICube (CNRS / Université de Strasbourg)

Supervisors : Hyewon Seo (ICube, Strasbourg, seo@unistra.fr)
 Frederic Cordier (ICube, Strasbourg and UHA, Mulhouse, fcordier@unistra.fr)
 Guoliang Luo (Jiangxi Normal University, China)

Prerequisite : - C/C++ Programming
 - Basic notion in statistics, and interest for facial animation. Knowledge in neural network is a plus.

Keywords : facial animation, neural network, dimension reduction.

Subject :

Realistic facial animation has been a long sought research subject in computer graphics. While there has been a large body of work that learns from individual data [2][3][4], little has been done with the idea of using multiple sets of animation data. In particular, learning from a population data becomes nontrivial when it comes to animation data.

In this project, we will develop a learning based facial animation technique that makes use of a



population of 4D facial scan data with markers. Learning based methods that are appropriate for time-varying data (RNN[5], evolving RBF[6], etc.) will be adopted. This will require us to build a common representation space for the population of animation data. In doing it, we will prefer to avoid computing the temporal correspondence among them.

To sum up, specific objectives of this stage are:

1. Investigation of a compact mathematical representation of animation data. Linear or nonlinear models (PCA, Kernel PCA [7], LLE[8], isomap[9], etc.) will be considered, with a specific focus on the common representation space for a population data. Several types of distribution will also be considered, such as Gaussian or non- Gaussian distributions [10].
2. Development of a learning based facial animation system with neural network, with focus on modeling the relation between the facial morphology and the animation.

Bibliographie

- [1] G. Luo, G. Lei, Y. Cao, Q. Liu, H. Seo, Joint Entropy based Motion Segmentation for 3D Animations, submitted, 2015.
- [2] X. Ma, B. H. Le, and Z. Deng, Style learning and transferring for facial animation editing. ACM SIGGRAPH/Eurographics Symposium on Computer Animation (SCA) 2009.
- [3] J. Noh and U. Neumann, Expression cloning. SIGGRAPH 2001.
- [4] Peter-Pike Sloan Charles F. Rose, III Michael F. Cohen, Shape and Animation by Example, Technical Report, MSR-TR-2000-79, Microsoft research, 2000.
- [5] K.Cho, B.Merrienboer, C.Gulcehre, F.Bougares,H. Schwenk, andY. Bengio. Learning phrase representations usingRNNencoder-decoder for statisticalmachine translation, EMNLP 2014.
- [6] V. M. Rivas, J. J. Merelo, P. a. Castillo, M. G. Arenas, J. G. Castellano, Evolving RBF neural networks for time-series forecasting with EvRBF Information Sciences, 165(3–4), Pages 207–220, 2004.
- [7] S. Romdhani, S. Gong, and A. Psarrou. A multi-view nonlinear active shape model using kernel PCA. Proc. of 10th British Machine Vision Conference (BMVC99), 483–492, BMVA Press, 1999.
- [8] S. Roweis, L. Saul. Nonlinear dimensionality reduction by locally linear embedding. Science, v.290 no.5500 , Dec.22, 2000. pp.2323--2326.
- [9] J. B. Tenenbaum, V. de Silva and J. C. Langford, A Global Geometric Framework for Nonlinear Dimensionality Reduction, Science 290 (5500): 2319-2323, 22 December 2000
- [10] Torbjørn Vik, Fabrice Heitz, Pierre Charbonnier: Robust Pose Estimation and Recognition Using Non-Gaussian Modeling of Appearance Subspaces. IEEE Trans. Pattern Anal. Mach. Intell. 29(5): 901-905 (2007)